

Peninsula Play Spaces Map



School District #63

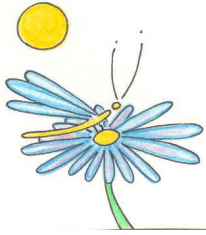


The Peninsula Parks and Play Spaces Project

Rediscovering Places to Play on the Saanich Peninsula



Sponsored by:
peninsula
connections
for early childhood



Play Spaces Survey Questions

Our project promotes awareness and use of our public parks and play spaces for the healthy development of young children (0-6 years) their families and caregivers. This survey will gather community assets and visions in order to create our community play space map and plan our activities. We appreciate your time and attention.

About You

1. Where do you live? (Please mark our map on back page with an X)
2. How many children do you have or care for? (Please list ages) _____
3. Are you their parent, grandparent or caregiver? _____

About Play Spaces

1. What is your favourite outdoor space in our region? (e.g. parks, beaches, neighbourhood areas, playgrounds, streets etc.) _____
2. What parks or play spaces (e.g. community centres, school yards, neighbourhoods, beaches) do you use most often? _____
3. Are there any barriers preventing you from using these spaces with young children? (e.g. time, support, transportation, cost, etc.) _____
4. What kind of outdoor activities do you and your children like to do? _____

Your Ideas

1. How could parks and play spaces in our region be improved to accomodate young children and their families? _____
2. How do you find information about local parks and play spaces? (e.g. internet, maps, information centres, word-of-mouth, other) _____
3. Would you or your family enjoy organized play activities in the parks? (e.g. nature, culture, crafts, music, other) _____
4. Do you have any other ideas, suggestions or questions? _____
5. Do you have any interests or skills to offer? _____

Contact Info (optional)

Would you like to receive information from Peninsula Connections for Early Childhood regarding future events? (This information will be kept confidential)

Name: _____
 Address: _____
 Email: _____ Phone: _____

THANK YOU!!!



Funded by a grant from Success by 6® (United Way) and other community groups. Contact: Janis Johnson at Beacon Community Services (250) 656-0134 or email: peninsulaconnections@beaconcs.ca

Sponsored by Peninsula Connections for Early Childhood

The PENINSULA PARKS AND PLAY SPACES Project

“Rediscovering Places for Young Children and their Families to Play on the Saanich Peninsula”

About Our Project We want to increase awareness and use of our public parks and play spaces to support the healthy development of young children (0-6 years) and their families. From Summer 2006 until the Spring 2007 we plan to:

- inventory community and environmental assets
- gather community ideas and visions
- create community play space map
- plan 3 “Play Days in the Parks”



About Us Peninsula Connections for Early Childhood is a community-based network. We were formed in 2005 in affiliation with PLAY (Greater Victoria Partnership in Learning & Advocacy for Young Children) and are supported by Beacon Community Services, School District No. 63 (Saanich), Lifecycles Project Society and volunteers. Peninsula Connections works within the School District No. 63 boundaries (Sidney, North Saanich, Central Saanich, and Saanich municipalities and the Tseycum, Tsawout, Pauquachin, and Tsartlip First Nations communities).

About You All Peninsula residents, particularly parents, grandparents and caregivers of young children are welcome to share ideas and get involved in our Play Spaces project. One important way to contribute is to fill out our Play Spaces Survey available at Commonwealth Place, the Panorama Recreation Centre or Beacon Community Services. Call or visit Beacon (see over) for more information.

Community businesses, media and institutions will be invited to sponsor and help promote the community map and play days in the parks. Watch for information...

The PENINSULA PARKS AND PLAY SPACES Project

“Rediscovering Places for Young Children and their Families to Play on the Saanich Peninsula”

About Our Project We want to increase awareness and use of our public parks and play spaces to support the healthy development of young children (0-6 years) and their families. From Summer 2006 until the Spring 2007 we plan to:

- inventory community and environmental assets
- gather community ideas and visions
- create community play space map
- plan 3 “Play Days in the Parks”



About Us Peninsula Connections for Early Childhood is a community-based network. We were formed in 2005 in affiliation with PLAY (Greater Victoria Partnership in Learning & Advocacy for Young Children) and are supported by Beacon Community Services, School District No. 63 (Saanich), Lifecycles Project Society and volunteers. Peninsula Connections works within the School District No. 63 boundaries (Sidney, North Saanich, Central Saanich, and Saanich municipalities and the Tseycum, Tsawout, Pauquachin, and Tsartlip First Nations communities).

About You All Peninsula residents, particularly parents, grandparents and caregivers of young children are welcome to share ideas and get involved in our Play Spaces project. One important way to contribute is to fill out our Play Spaces Survey available at Commonwealth Place, the Panorama Recreation Centre or Beacon Community Services. Call or visit Beacon (see over) for more information.

Community businesses, media and institutions will be invited to sponsor and help promote the community map and play days in the parks. Watch for information...

Our Partners Include Camosun College Early Childhood Care and Education Program; NIL/TU,O Child and Family Services; the Vancouver Island Preschool Association; Panorama Leisure and Recreation Centre; Vancouver Island Regional Library; and the Ministry for Children and Families (MCFD) and Vancouver Island Health Authority (VIHA). The Peninsula Parks and Play Spaces Project is funded by a grant from Success by 6® (United Way) and other community groups. For further information contact Janis Johnson via email: peninsulaconnections@beaconcs.ca, or phone: Beacon Community Services (250) 656-0134

The Peninsula Parks and Play Spaces Project promotes:

- play as a way for children to learn, connect with each other and have fun.
- outdoor play in safe places, for the healthy physical development of young children.
- positive interaction between caregivers, parents and young children for emotional, intellectual and social well-being.
- opportunities to connect with neighbours in public and safe places.
- respect and connection to the natural world and the environment.
- building connections amongst “neighbours” and stronger communities where everyone is valued.

In support of Success by Six®, the Peninsula Parks and Play Spaces project is prevention focused, research informed, and community based. The project is intended to increase family access to resources and supports to enable young children to have the best possible start in life. Communities that value and nurture young children make a significant investment in the future.

“The future belongs to those who give the next generation a reason for hope.” ~Teilhard De Chardin



Our Partners Include Camosun College Early Childhood Care and Education Program; NIL/TU,O Child and Family Services; the Vancouver Island Preschool Association; Panorama Leisure and Recreation Centre; Vancouver Island Regional Library; and the Ministry for Children and Families (MCFD) and Vancouver Island Health Authority (VIHA). The Peninsula Parks and Play Spaces Project is funded by a grant from Success by 6® (United Way) and other community groups. For further information contact Janis Johnson via email: peninsulaconnections@beaconcs.ca, or phone: Beacon Community Services (250) 656-0134

The Peninsula Parks and Play Spaces Project promotes:

- play as a way for children to learn, connect with each other and have fun.
- outdoor play in safe places, for the healthy physical development of young children.
- positive interaction between caregivers, parents and young children for emotional, intellectual and social well-being.
- opportunities to connect with neighbours in public and safe places.
- respect and connection to the natural world and the environment.
- building connections amongst “neighbours” and stronger communities where everyone is valued.

In support of Success by Six®, the Peninsula Parks and Play Spaces project is prevention focused, research informed, and community based. The project is intended to increase family access to resources and supports to enable young children to have the best possible start in life. Communities that value and nurture young children make a significant investment in the future.

“The future belongs to those who give the next generation a reason for hope.” ~Teilhard De Chardin

