

Special places...where I grew food...where I'd like to grow food...the best garden...
WSÁNEĆ
PEPÁKEN HÁUTW
...plants and medicines...
...drumming and singing...



PEPÁKEN HÁUTW (Blossoming Place) celebrations

Support through volunteers, mapping activities, SENĆOTEN name games, food prep, composting...

PEPÁKEN HÁUTW_ (Blossoming Place) celebrations

Volunteers serving food



PEPÁKEN HÁUTW_ (Blossoming Place) celebrations

Volunteers support food tasting table, seed saving activities





UVic Invasive Species Management Plan
*Support for student interns engagement activities
and postings to the UVic Community Green Map*



Redfish School of Change at SNIDØEL

Support for Tsawout Elder, SeaChange, PEPÁKEN HÁUTW interpretive walk, community mapping, cultural, historical landscape stories in SNIDØEL



CityStudio Victoria
POLI351 Public Policy Analysis:
Growing Community “From the Ground Up”
*Support for field trip to PEPÁKEN HÁUTW, intro to community mapping,
outreach and community engagement*

CAPI's Chinese Youth Leadership program at SNIDCEL

interpretive walk, community mapping intro, stories, restoration activities with Tsawout Elder, SeaChange





SeaChange Marine Conservation Society
A working AGM at SNIDØEL
*Support with interpretive walk, community mapping intro,
story sharing, restoration activities*



CityStudio Victoria
POLI351: Growing Community “From the Ground Up”
Support for outreach and community engagement, launch party



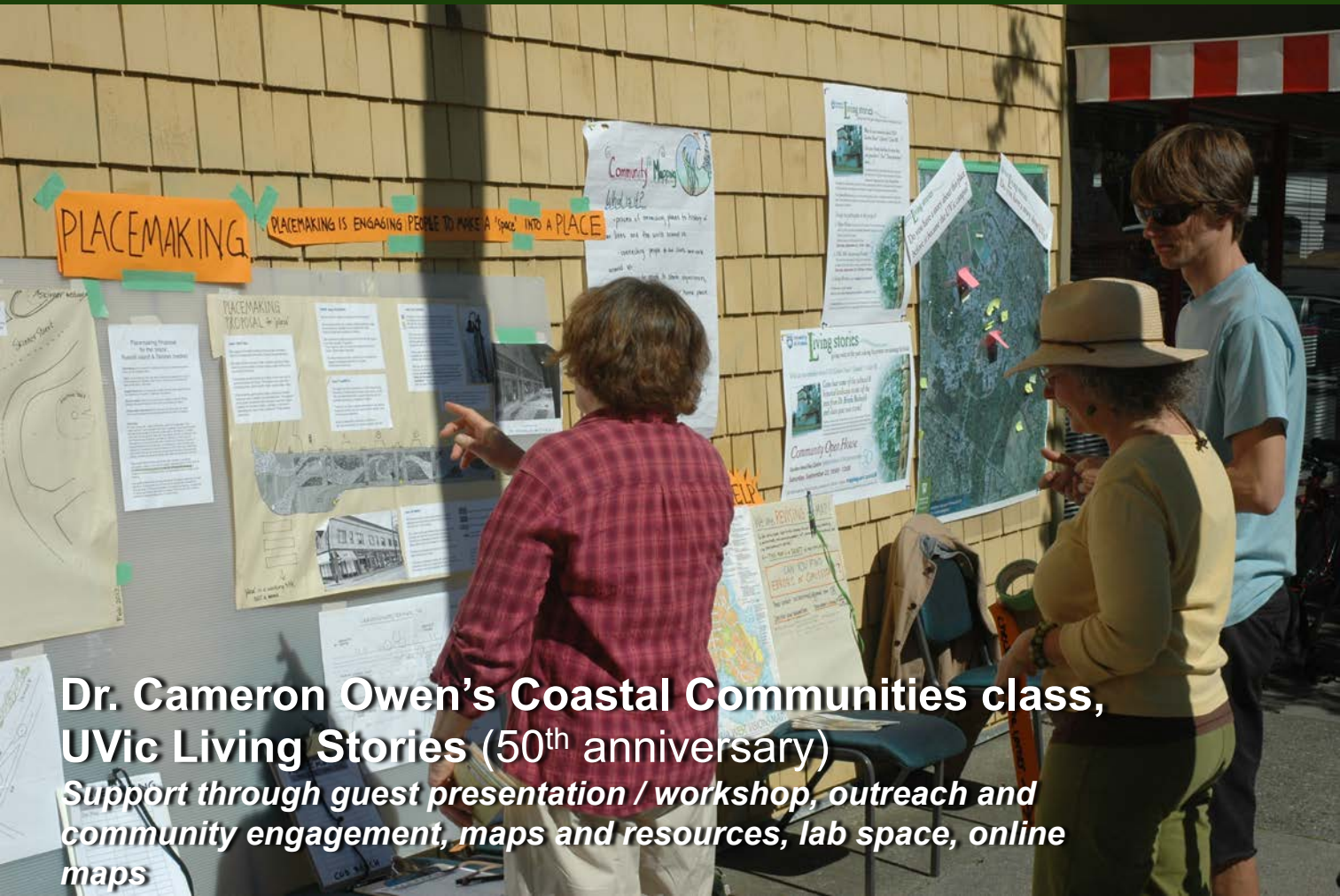
CityStudio Victoria

Support for classes through outreach and community engagement, resources and maps for baseline studies, KM through online maps



Fernwood Community Green Map

Support through outreach and community engagement, resources, maps, lab space, student engagement, online maps



Dr. Cameron Owen's Coastal Communities class, UVic Living Stories (50th anniversary)
Support through guest presentation / workshop, outreach and community engagement, maps and resources, lab space, online maps



UVic Living Stories (50th anniversary)
Dr's Cameron Owen and Brenda Beckwith
*Support with art and narative based outreach and community
engagement, interpretive walks, maps and resources*



GEOG407: Activism and Community-Based Planning
Support for undergrad student action project, student food insecurity

Shelbourne Valley Action Plan

Developed and implemented a community engagement plan for Saanich with student internships, volunteers, public events and final report



Uni201: Environmental Art and Activism

The wayfinding tree





Neighbourhood Community Green Map mural, Havana, Cuba



**Our future planners!
Reimagining our school yard, St. Joseph's Elementary
School**

Geog391: Community Food Mapping

Community partner and student project support



Community Food Mapping projects

Community partners included ICA, Community Toolshed, CRFAIR among others



Conference: Western Division of the Canadian Association of Geographers, Prince George

Awesome student poster presentations



Community Mapping at SNIDCEE

Support for numerous events and restoration activities in SNIDCEE



Dr. Cameron Owen's Northern Europe Sustainability Field School

We're honoured to help organize visits with community partners, the website, share resources, lab space, and support students with their action projects





Dr. Cameron Owen's Northern Europe Sustainability Field School
A visit to Træstubben, an inner city nature school in Copenhagen



Community engaged, action based teaching and learning: North Saanich Farmers Market
Dr. Brenda Beckwith and WSÁNEĆ knowledge keepers organized a First Nations Pit Cook with support from students in Environmental Studies and Geography



**Community mapping table at the
North Saanich Farmers Market**
Student and community interns and volunteers

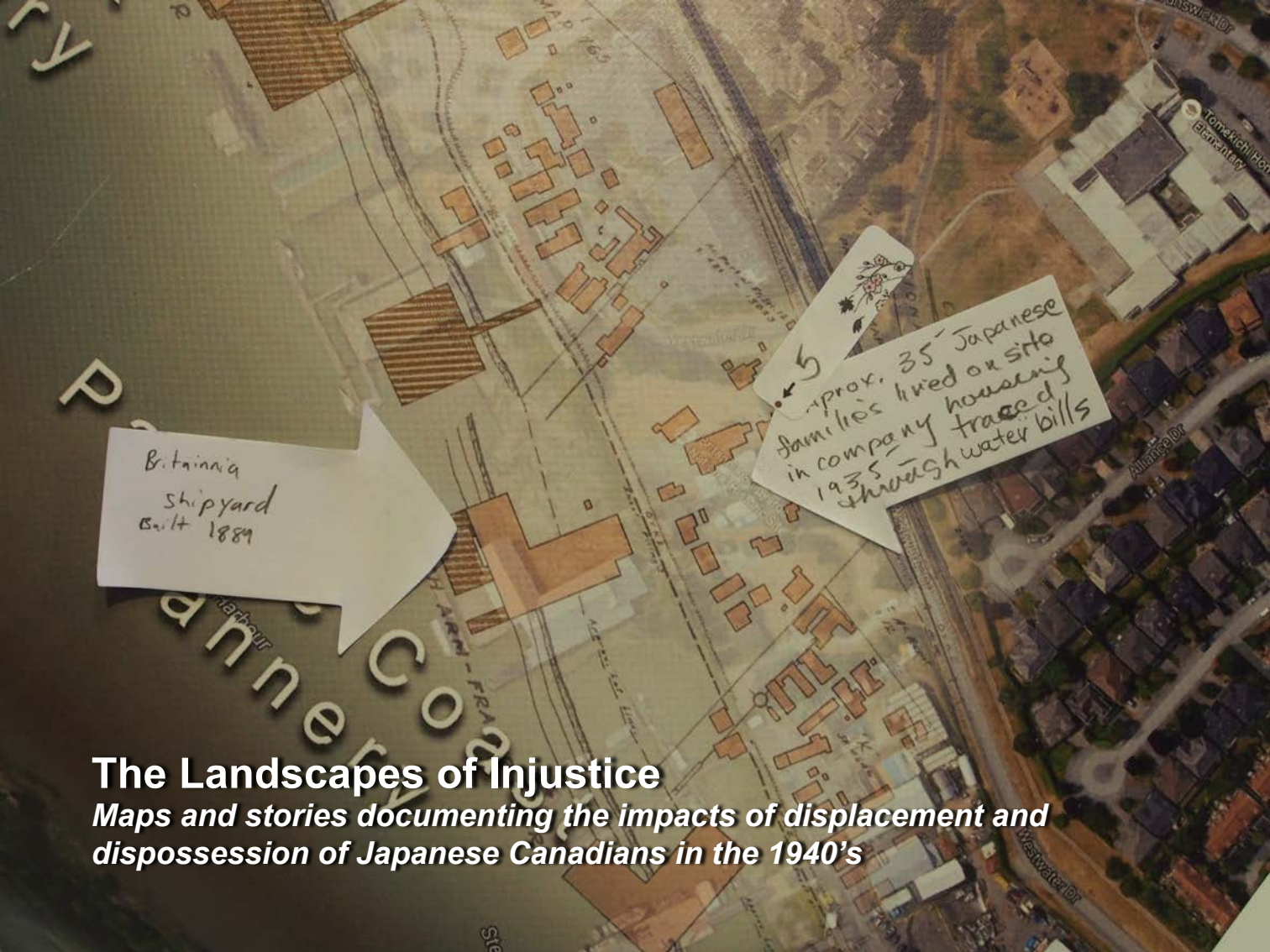


Community engaged, action based teaching and learning: Sandowne Vision Project
CRFAIR mentored paid interns and students in a community mapping engagement process to repurpose an 83 acre former horse racecourse to food production, education and recreational use



The Landscapes of Injustice

We're honoured to have supported a number of community engagement events using mapping to help give voice to the impact of displacement and dispossession of Japanese Canadians in the 1940's



The Landscapes of Injustice

Maps and stories documenting the impacts of displacement and dispossession of Japanese Canadians in the 1940's



The Landscapes of Injustice

Maps and stories documenting the impacts of displacement and dispossession of Japanese Canadians in the 1940's



Students present on their findings regarding decolonization of place / building names on the University of Victoria campus

Vision Sandowne open house
Students present their 'this is what you said' community map





#biketoria, CityStudio, Dr. Cameron Owens
*what a privilege to support action-based learning like this
and the awesome student projects using maps!*

The Community Tool Shed

Jaimy Simmonds, Morgan Henderson, Wendy
Parks, Kirsten Mathison, Nikki Lukat

Geog391: Community Food Maps

Final student presentation 'in community' at the legacy gallery



Geog391: Community Food Maps

Vision Sandowne – thematic walkabouts of the racetrack lands, facilitated by community mapping students



PEPĀĪĪĪ HĀĪĪĪĪ (Blossoming Place)
celebrations
SENĆĪĪĪĪ names game



PEPÁKEN HÁUTW_ (Blossoming Place) celebrations

Students and community volunteers having fun with composting!



Launch of the Fernwood Community Green Map



Environmental Studies
painting green map icon t-shirts
celebrating Brenda Beckwith's
contributions to the school





Uni102

a wish tree project. Our hopes, dreams and wellwishes for the UVic community

A close-up photograph of three green leaves hanging from a tree branch. The leaves are arranged horizontally and have white text written on them. The background is a blurred network of brown tree branches.

SO
MANY

Books

SO
LITTLE
TIME

Uni102

*a wish tree project. Our hopes and dreams,
what we value, what we love*

The United Way Community Tables Project

Student interns facilitate the Brentwood community's asset mapping and visioning





Fernwood Community Green Map Project
*Support through outreach and community engagement,
resources, maps, lab space, student engagement, online
maps*



UVic Living Stories (50th anniversary)
Dr's Cameron Owen and Brenda Beckwith
Support with art and narrative based outreach and community engagement, interpretive walks, maps and resources



**A few Uvic Community Mapping Collaboratory Interns
2014**

They are this crazy and it is this fun!



Fernwood Community Green Map Conversation Guide and Mapping Game

Play this game with a group of friends or neighbours to discuss and map significant aspects of your community. Share stories about the places that make Fernwood home for you. Compare your idea of neighbourhood boundaries with others' ideas. Consider social, economic and environmental factors.

Objective: Discover what defines your community by discovering, exchanging and mapping significant people, places, things and events that make your community unique. Share stories about the places that make Fernwood home for you. Compare your idea of neighbourhood boundaries with others' ideas. Consider social, economic and environmental factors. Share stories about the places that make Fernwood home for you. Compare your idea of neighbourhood boundaries with others' ideas. Consider social, economic and environmental factors.

How to Play: Set a goal, such as to invent a new community, and dialog with individuals who share your goal. Share stories about the places that make Fernwood home for you. Compare your idea of neighbourhood boundaries with others' ideas. Consider social, economic and environmental factors.



Share a favourite casual harvesting spot

A neat connection

Identify an art spot

Envision an event

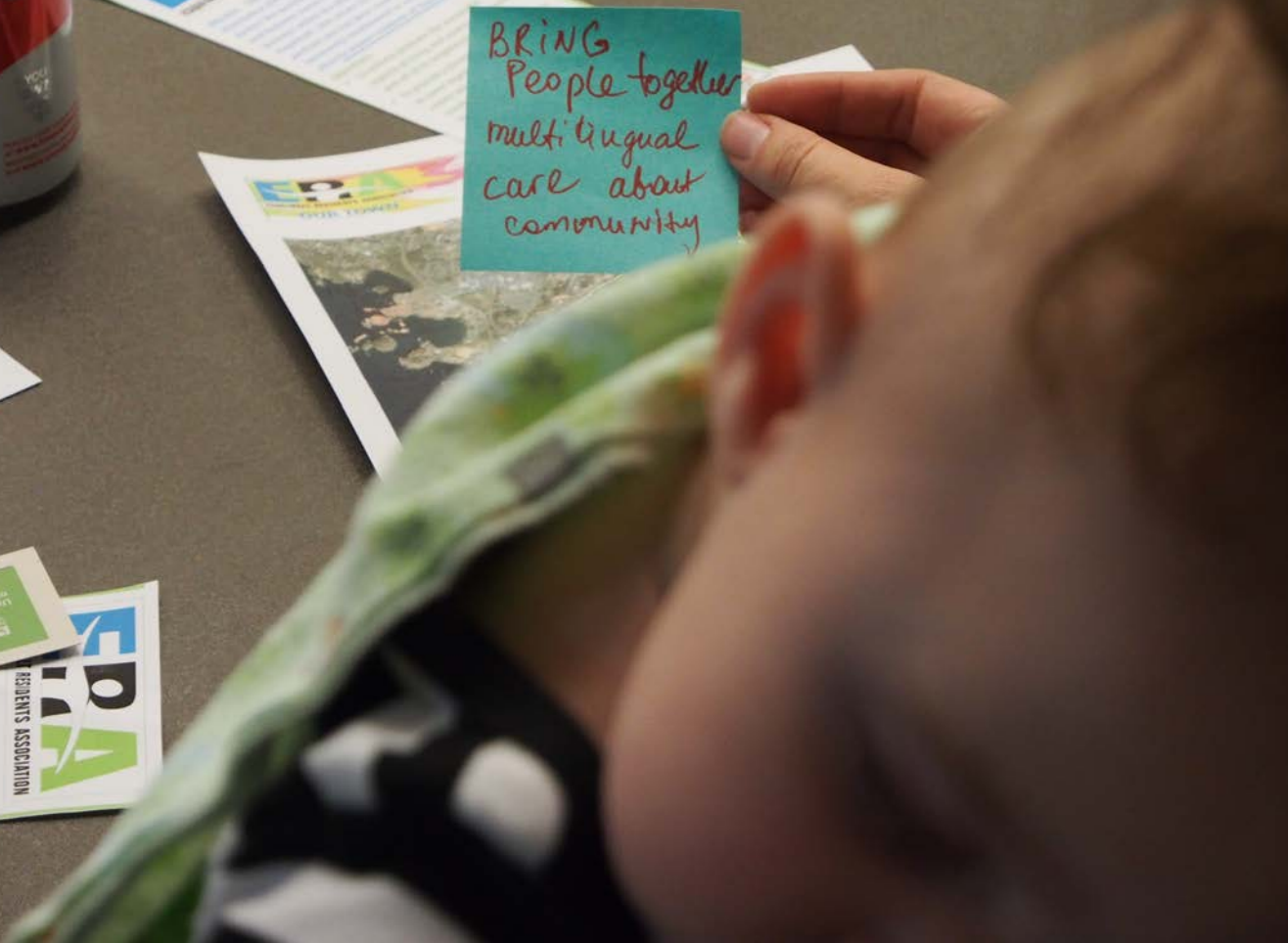
Make a decision for action

A Community Mapping Game

Adapted from Dan Dougherty's Fernwood Community Conversation Game



BRING
People together
multilingual
care about
community





Community Mapping with the Malahat First Nation



Community engaged, action based teaching and learning: North Saanich Farmers Market

Dr. Brenda Beckwith and WSÁNEĆ knowledge keepers organized a First Nations Pit Cook with support from community volunteers and students in Environmental Studies and Geography

**Community engaged, action
based teaching and learning:
North Saanich Farmers Market**

*Dr. Brenda Beckwith and WSÁNEĆ
knowledge keepers organized a First
Nations Pit Cook with support from
community volunteers and students in
Environmental Studies and Geography*





Uvic Library

The Uvic Library has many local and international green maps available for loan in their print map library and are in process of adding communit maps to their digital map collection

Community Mapping

A Transformational Learning and Planning Tool for Inquiry Engagement

Ken Josephson and Maureen Lyden
University of Victoria, Victoria, BC, Canada
www.mapping-jacobus.com
www.mapping-jacobus.com
University of Victoria

For more than 100 years the Canadian Geographical Community Mapping Network – a diverse group including Indigenous communities, educators, neighbourhood activists, scientists, students, teachers, entrepreneurs and authors in Victoria, British Columbia have worked together to create maps and projects that reflect the social values and visions of diverse groups and local citizens. This is our story.

What is Community Mapping?

Community mapping is a participatory process that allows people to create maps that reflect their own knowledge and experiences. It is a tool for inquiry, learning, and planning. It is a way to create maps that reflect the social values and visions of diverse groups and local citizens. This is our story.

Map-Based Development

Maps do more than show the location of things. They tell us about the world and the people who live in it. They are a way to create maps that reflect the social values and visions of diverse groups and local citizens. This is our story.

Community Planning

Community mapping is a participatory process that allows people to create maps that reflect their own knowledge and experiences. It is a tool for inquiry, learning, and planning. It is a way to create maps that reflect the social values and visions of diverse groups and local citizens. This is our story.

Post your heart connections on the map!

Community Mapping is a participatory process that allows people to create maps that reflect their own knowledge and experiences. It is a tool for inquiry, learning, and planning. It is a way to create maps that reflect the social values and visions of diverse groups and local citizens. This is our story.

PACIFIC WEST VISIONS MAP

Uvic Library
The Uvic Library has many local and international green maps available for loan in their print map library and are in process of adding communit maps to their digital map collection



GEOG407: Activism and Community-Based Planning
An undergrad student project attempts to draw attention to student food insecurity.

Over 60,000 hits in 6 weeks! What other Uvic Research project gets that kind of activity!



**Dr's Cameron Owens and Brenda Beckwith UVic
Living Stories Project (50th anniversary)**

Maps, resources, student led art engagement, interpretive walks of the cultural historical landscape stories of UVic

UVic Living Stories Project (50th anniversary)

Maps, resources, student led art engagement, interpretive walks of the cultural historical landscape stories of UVic





UVic Living Stories Project (50th anniversary)
Student led art engagement, interpretive walks of the cultural historical landscape stories of UVic



UVic Living Stories Project (50th anniversary)
Student led art engagement, interpretive walks of the cultural historical landscape stories of UVic



UVic Living Stories Project (50th anniversary)
Student led art engagement, interpretive walks of the cultural historical landscape stories of UVic

UVic Living Stories Project (50th anniversary)

Student led art engagement, interpretive walks cultural historical landscape stories of UVic

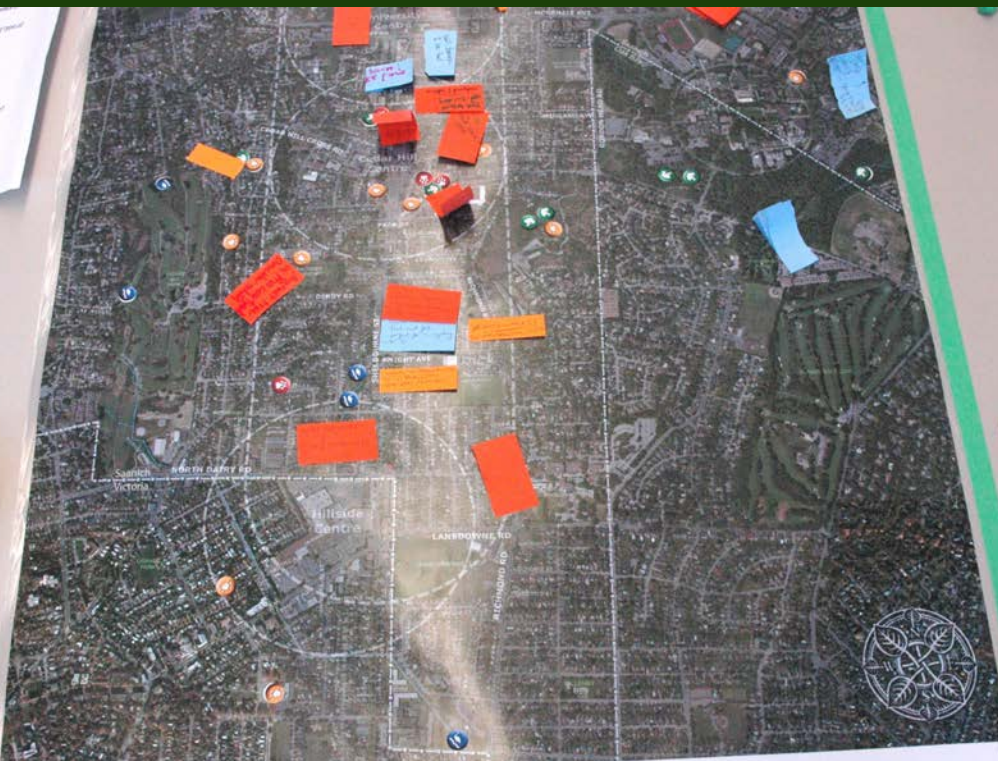




Dr. Cameron Owens, UVic Living Stories (50th anniversary)

Students in the Coastal Communities course, mentored by neighbourhood knowledge keepers, hosted a mapping table at the Vic West fall corn roast

- C. Transportation**
- include activities such as walking, pushing a stroller, etc.
 - walk to shop
 - bike to work
 - car to school
 - wheelchair
- include obstacle
- D. Ease and Needs**
- Supporters for environmental issues for the future!
- 1 Transportation
 - 2 Natural Environment
 - 3 Services
 - 4 Public Institutions
 - 5 Community/Recreation
 - 6 Other



Shelbourne Corridor Action Plan

Map & Vision Survey · Share your vision and help plan the corridor!



OUR COMMUNITY MAP



Lansdowne Middle School

Kristi Kilpatrick uses community mapping as a tool for integrating and making 'place sense' of her grade 6 curriculum

Sustainable Highschools Community Mapping Workshop

Sierra Club BC

